



Mimer SQL Mobile

Getting Started

Version 9.1

Mimer SQL Mobile, Getting Started, Version 9.1, December 2002
© Copyright Upright Database Technology AB.

The contents of this manual may be printed in limited quantities for use at a Mimer SQL installation site. No parts of the manual may be reproduced for sale to a third party.

Information in this document is subject to change without notice. All registered names, product names and trademarks of other companies mentioned in this documentation are used for identification purposes only and are acknowledged as the property of the respective company. Companies, names and data used in examples herein are fictitious unless otherwise noted.

Produced and published by Upright Database Technology AB, Uppsala, Sweden.
P.O. Box 1713,
SE-751 47 Uppsala, Sweden.
Tel +46(0)18-780 92 00.
Fax +46(0)18-780 92 40.

Mimer Web Sites:

<http://developer.mimer.com>

<http://www.mimer.com>

<http://www.upright.se>

Contents

Getting Started	1
Licensing Mimer SQL Mobile	1
Rights and Privileges.....	1
Documentation	1
Useful Links	2
Setting-up a Database Client	2
Creating Mimer SQL Mobile Databases	2
Creating a Database.....	2
Starting and Stopping Database Servers	4
Starting and Stopping on Windows NT, 2000 and XP	4
Autostart – NT, 2000 and XP	4
Starting and Stopping on Windows 98 and ME	4
Logging Database Events	5
Windows NT, 2000 and XP	5
Windows 98 and ME.....	5
Running Mimer BSQL and Other Utilities	5
The Developer and Example Environments	5
Accessing the Example Environment.....	6
Building the Development Environment.....	7
Mimer PSM Debugger	7
Starting the Mimer PSM Debugger.....	7
Packaging Mimer SQL Mobile with a Windows Application	8

Getting Started

Welcome to Mimer SQL Mobile. This document describes how to set-up Mimer SQL Mobile on Windows 98, ME, NT, 2000 or XP after you have installed it.

To get the most out of this document, you should be familiar with your Windows environment and know how to use the various Windows system tools.

Licensing Mimer SQL Mobile

When you install Mimer SQL Mobile, a default development edition license is installed. This license covers basic usage for development purposes and enables 10 concurrent users. You do not need a license for client access.

If you want to use Mimer SQL Mobile for any purpose other than development, you must purchase a commercial license. Contact your [Mimer SQL distributor](#) to purchase the license you require. Your new license will be sent to you via e-mail. You apply the new license by double-clicking on the e-mail attachment.

For more information, start Mimer Administrator, located in the Mimer SQL Mobile program group, click the **License Key** tab and select **Help**.

Rights and Privileges

On Windows NT, 2000 and XP, you must belong to the administrators group to set-up Mimer SQL Mobile clients and servers.

Documentation

The Mimer SQL Mobile Documentation Set and Mimer SQL Mobile Release Notes, available in PDF format are available in the Mimer SQL Mobile program group, under Online Documentation.

Note: The documentation set will only be available if you chose to install it when you installed Mimer SQL Mobile.

If you would like printed copies of the documentation set, contact your Mimer SQL representative.

As the documentation is in PDF format, you must have access to Adobe's Acrobat reader. If you have a CD distribution of Mimer SQL Mobile, Adobe Acrobat reader is included on it. Or, you can get an Adobe Acrobat reader for the platform of your choice, free of charge from: <http://www.adobe.com/products/acrobat/readstep.html>

Useful Links

The following are links to various pages on the [Mimer SQL Developer Site](#) which may be of use:

- [Mimer SQL FAQs](#) – Frequently asked questions and their answers
- [Mimer SQL How-tos](#) – Practical guides to getting the most out of Mimer SQL products
- [Mimer SQL Downloads](#) – The latest developer editions of Mimer SQL products, available for download

Setting-up a Database Client

If you want to access a Mimer SQL Mobile database server (also referred to as a remote database) already installed on your network, all you need to do is set-up a Mimer SQL Mobile database client.

You set-up a client using the Mimer Administrator.

- 1 Start the Mimer Administrator, located in the Mimer SQL Mobile program group.
- 2 Click the **Remote** tab and then click the **Add** button.
- 3 In the Remote Database Definition dialog box, enter the database name, the node (computer) where the database is located and which network protocol to use.
 - The database name must be the same name used on the remote computer. Ask your system or database administrator if you are unsure of the name.
 - The node name is the name of the computer as registered in the network. It is usually entered in lower case letters.
 - The network protocol is usually **tcp**. If the remote computer is a Windows NT server, you can also use **NamedPipes**.

Click **OK**, you are ready to access the Mimer SQL Mobile database from your development tool. An ODBC data source with the same name as the database is created automatically.

Creating Mimer SQL Mobile Databases

Creating Mimer SQL Mobile databases is easy. All you need to do is:

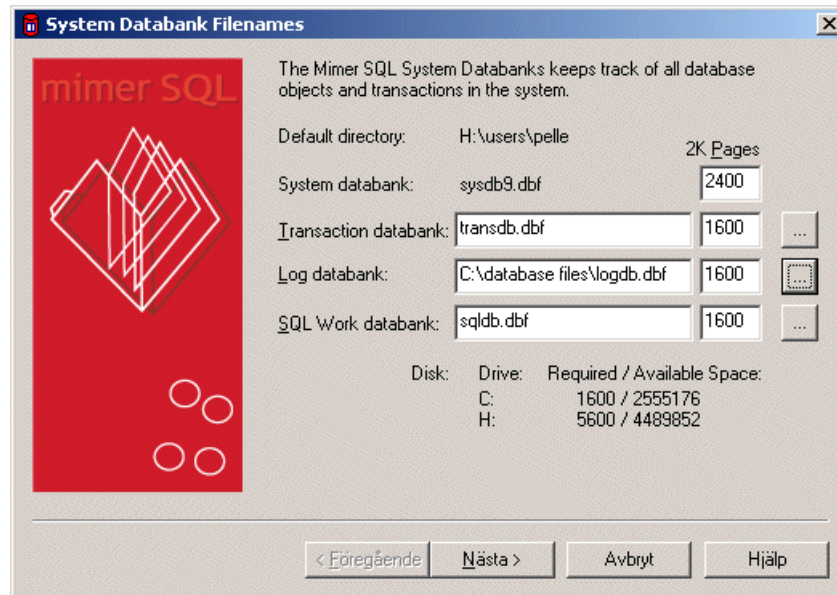
- add a database definition for the database
- create the system databanks
- set the `SYSADM` password
- create a database user
- start the Mimer SQL Mobile database server.

You do this using the Mimer Administrator and a wizard to guide you.

Creating a Database

- 1 Start the Mimer Administrator, located in the Mimer SQL Mobile program group.
- 2 In the Mimer Administrator, on the **Local** tab, click **Add** to create a database. The Local Database Definition dialog box opens.

- 3 Enter the name of the database and the directory in which you want to create it. Click **OK**.
- 4 The Mimer Administrator asks if you want to create system databanks. In the Create Systems dialog box, click **Yes**. The following wizard starts:



The example above demonstrates the following important points:

- you must specify the file locations of databanks not in the default directory as absolute paths.
- to safeguard against data loss in the event of a hard disk failure, place the log databank, LOGDB, on a separate disk from the other databanks.
- If possible, also place TRANSDB on a separate disk. However, LOGDB and TRANSDB should not be placed on the same disk. If you only have one alternative disk, use it for LOGDB. Mimer SQL Mobile examines the available hard disks and suggests how the files should be distributed. (In the above example, C: and D: are on separate hard disks 0 and 1)

Note: On Windows NT, 2000 and XP, you can use the Disk Administrator in the Administrative Tools menu to check the layout of logical disk partitions (e.g. C:, D:) on the available hard disks.

The file sizes are expressed in 2K blocks. The initial sizes are not critical as the files will be automatically extended as required.

Enter the database information and click **Next**.

- 5 The next step is to specify the password for the system administrator SYSADM. Enter the system administrator's password, and confirm it. Click **Next**.

Note: Keep the SYSADM password secure, as SYSADM can alter passwords for Mimer SQL Mobile users that he/she creates. If you lose the SYSADM password, it cannot be retrieved from your Mimer SQL Mobile system.

- 6 When the system databank creation is complete, the wizard asks you what you want to do next. Select both options available and click **Next**.
- 7 Continue with the wizard to create a development user and start the database server.

After completing the wizard, you can access your database directly from your favorite ODBC tool. You can also access it using Mimer WSQL – available for download for free from our Web site. Click to read more about [Mimer WSQL](#).

If you want to access this database from another computer in the network, you must install and set-up a database client on the other computer. See *Setting-up a Database Client* on page 2.

Starting and Stopping Database Servers

How you start and stop Mimer SQL Mobile database servers depends on the Windows operating system you are using.

However, on all Windows platforms supported by Mimer SQL Mobile, you can control local database servers using the Mimer Administrator.

Go to your Mimer SQL Mobile program group and select **Mimer Administrator**, Mimer Administrator starts.

Click the **Local** tab and right-click on the database name. A pop-up menu enables you to start and stop the database server.

Starting and Stopping on Windows NT, 2000 and XP

On Windows NT, 2000 and XP, you can start and stop database servers, and enable or disable log-ins using the Mimer Controller, located in the Mimer SQL Mobile program group. You can control both remote and local databases using the Mimer Controller.

The operating system equivalent of the Mimer Controller is the Services dialog box in the Control Panel. You can use Windows Services to start and stop Mimer SQL Mobile databases.

Autostart – NT, 2000 and XP

By default, Mimer SQL Mobile database servers are created with the startup setting set to **Autostart**. Mimer SQL Mobile database servers will start automatically whenever the machine reboots.

You can view and change the Autostart setting using the Mimer Administrator or Windows Services.

Starting and Stopping on Windows 98 and ME

On Windows 98/ME, database servers are started automatically whenever they are needed by an application. The database servers remain active until they are explicitly shut down.

When you create a database, an ODBC data source is automatically defined. This provides you with automatic access to the database from any ODBC enabled application.

Logging Database Events

Windows NT, 2000 and XP

On Windows NT, 2000 and XP, Mimer SQL Mobile writes events to the Windows event log. Use the Event Viewer, located under Administrative Tools, to examine the event log.

The source for Mimer SQL Mobile events is the name of the database service they relate to, and they are logged in the Application log.

Windows 98 and ME

On Windows 98/ME, information about any database server errors that occur during database startup can be found in the MIMER.LOG file located in the database's home directory.

Information about the latest startup is also displayed in the Mimer SQL Mobile database server's main window. If you receive any error messages, check this window for more information on the error.

Running Mimer BSQL and Other Utilities

In order to run most of the Mimer SQL Mobile utilities from a command prompt window, you must specify which database to access. You can do this in different ways:

- Enter the database name on the command line, e.g. `BSQL database_name`
- Use the environment variable `MIMER_DATABASE`, e.g.
`SET MIMER_DATABASE=database_name`
- Use an ODBC default data source. Specify **Default** as the data source name in the Mimer Administrator.

The order of the three methods is significant as the first methods override the later ones. For example, specifying the database on the command line overrides the setting of the `MIMER_DATABASE` environment variable.

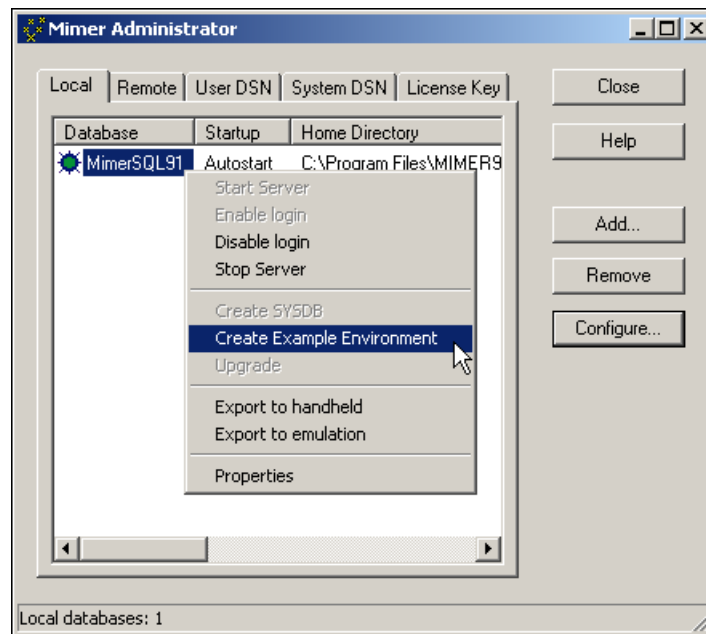
The Developer and Example Environments

If, when installing Mimer SQL Mobile, you chose to install the development and sample files, you can choose to set-up a development environment and an example environment.

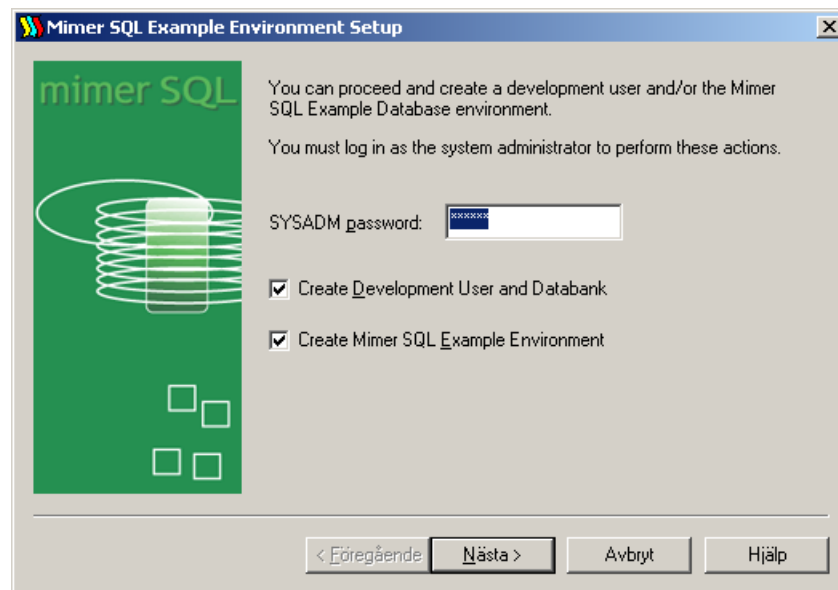
To install the environments:

- 1 Start Mimer Administrator, located in the Mimer SQL Mobile program group.

- 2 Select the **Local** tab, and right-click on the database server, for example:



- 3 Select **Create Example Environment**, the following dialog box opens:



- 4 Select the environment(s) you want to create and click **Next**. A wizard will guide you through the necessary steps.

Accessing the Example Environment

To access the example environment, you can use:

- Mimer BSQL, available in the Mimer SQL Mobile program group.
- Any ODBC-based SQL tool.
- WSQL, an unsupported SQL tool, available for download from <http://developer.mimer.com/downloads>

Building the Development Environment

Note: You must have the Microsoft Developer Studio or equivalent development kit installed.

To build the environment:

- 1 Open a command prompt window.
- 2 Change the current directory to the installation directory (on Windows NT, the default is \Program Files\Mimer91 NT\dev).
- 3 Enter the following commands:

```
NMAKE /F makefile.mak
DSQL
OSQL
NMAKE /F makefile.mak clean
```

You must have a path which includes the `NMAKE` program.

The sample programs created accept SQL statements and display selected results.

Note: To build and run the `OSQL` (ODBC sample program) you must have defined a data source.

You can use the `makefile` as a starting point for writing your own `makefiles`.

An alternative to the above steps is to open the `makefile` in Microsoft Developer Studio and then compile the programs.

Mimer PSM Debugger

Mimer SQL Mobile also contains a Java-based graphic debugger for PSM routines. The Mimer PSM Debugger supports watching variables, step-wise execution and setting breakpoints.

You can debug procedures, functions and triggers.

Mimer PSM Debugger requires a Java 2 (version 1.2 or later) compatible Java runtime environment.

You can download the files from: <http://java.sun.com/products/jdk/1.2/jre/download-windows.html>

Starting the Mimer PSM Debugger

You start the PSM debugger with this command:

```
java -jar psmdebug.jar
```

The syntax for the database URL in the login dialog is:

```
hostname[:port]/database
```

If the database resides on your local machine, then specify `localhost` as the host name.

Examples:

```
localhost/testdb
```

```
my_node.mimer.se/supplier
```

```
my_node.mimer.se:1365/supplier_temp
```

Packaging Mimer SQL Mobile with a Windows Application

If you want to package your application with Mimer SQL Mobile, you should read the Mimer SQL Packaging Guide for Window. You can access it [here](#).